



Logic Planet Inc
www.logicplanet.com

EASY EST

Comprehensive Estimating and Costing Tool for the Infrastructure Industry
The Intelligence Behind Successful Projects

Infrastructure Industry:

The growth of any nation can be judged by the Infrastructure development. The growth rate of a developing country is 4-8%; while the construction sector varies for 10-23%. This shows the importance and impact of the construction sector for the nation. These are the main pillars for the growth in Housing, Industry, and Manufacturing. This primarily depends on the Construction sector.

Estimation is a probable cost of a work determined by calculating the quantities, from drawings and with current rates.

Present Scenario

In the present scenario the companies have good standard of working software's. But computing is very laborious and recurring because of inadequate data and isolation of connectivity. As a result of which the data has to be re-entered. Here the most of the estimation working process is based on the rate analysis, estimation, current rates, which are independent of each other and are not coordinated. Because of which time is lost, there is an increase in error rate, and ultimately productivity is lost.

Easy Est

The cost estimation tool to quickly calculate cost of a project structured on bill of quantities in an extensive specification library environment. This is done in the shortest possible time than other conventional applications. It was built with two things in mind user-friendliness and cost effective and targeted at companies and individuals also.

Estimation/Quotation Module:

- An extensively user friendly tool for preparing Estimation/Quotations.
- Standard Specifications and User Defined Specifications.
- Ready data of Rate analysis of each SSR and Customizable data available.
- Prototype Quotation and quotation wizard available.
- Estimate related mathematical measurement available in Formulae's and LBD (Length, Breadth, and Depth).
- Formulae are for complicated surface and volume calculations.
- Different Estimate documents for Global and Local Estimates.
- Price details for the entire Estimate and individual Specification/Work.
- Details of the overhead costs on Estimate and on individual work can be viewed.
- Access to productivity of earlier projects.
- Calculation of Variance from the Estimate and the Global Estimate.

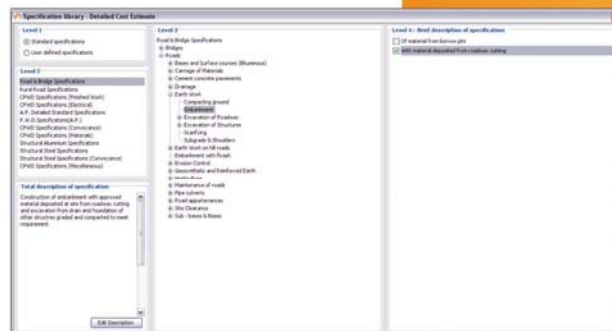
User-friendly Wizard based: The wizard based system is such where you can work from the same window and you need not go to any other menu/window for selection/work. This helps to save time and it will allow you to work without any deviations.

Level of usage: From Assistant Engineers to Chief Engineers (AE's - CE's) and from Executive to Managerial level people can use this software without many complications.

Databases: We have provided the database for the all SSR's (Standard Schedule Rates). The SSR's have all the information for the work like description, rate analysis and the rates. Each SSR has its own rate and rate analysis and we have provided all the SSR's for the A.P region and some Central specification libraries too.

Databases Provided:

- A.P Detailed Standard Specifications
- Road & Bridge Specifications
- Rural Road Specifications
- PWD Specifications (A.P)
- CPWD Specifications (Finished Work)
- CPWD Specifications (Electrical)
- CPWD Specifications (Conveyance)
- CPWD Specifications (Material)
- CPWD Specifications (Miscellaneous)
- Structural Aluminum Specifications
- Structural Steel Specifications
- Structural Steel Specifications (Conveyance)



Documents: We provide different types of documents for the user to generate estimates and corresponding reports.

1. Detailed Cost Estimate
2. Abstract Cost Estimate
3. Analysis of Rates
4. Bill of Quantities
5. Measurement Book
6. Global Cost Estimate
7. Variance of Global Cost Estimate
8. Variance of Local Cost Estimate
9. Approximate Cost Estimate
10. Steel Cost Estimate
11. Steel Quantity Estimate
12. Earthwork Quantity Estimate
13. Valuation
14. Cover

Rate Analysis:

- Rate analysis of each specification is provided.
- Labour, Material and Machinery components listed.
- Overheads and Contractor's profit included as per government standards.
- User can edit rate analysis as per requirement.
- Unwanted input resources can be deleted.
- New input resources can be added as per requirement.
- Existing input resources from other libraries can be used.
- User can increase/decrease rates of all input resources.
- Miscellaneous items can be included in the analysis.

Define Dimensions:

- Quantity calculation in N.L.B.D format i.e. Numbers, Length, Breadth and Depth/Height.
- Each variable (N, L, B and D) provides three input fields for easier calculation.
- Ability to add multiple sets of dimensions for all specifications.
- User can add/deduct multiple quantities for specification quantity calculation.
- User can make use of upto 120 2D/3D/Building Objects for random length/area/volume calculation.
- Cumulative amount of estimate is updated on addition of quantity for each specification.
- Cumulative amount can be compared against Predefined cost to match the funds available for a project.

Tools & Features:

Auto Dimensions:

Each Specification is assigned a unique set of dimensions which load automatically when it is used in the current estimate.

Co-Related Dimension:

Each Specification is assigned multiple sets of dimensions and user can select the required set when using it in the current estimate.

Inter-Related Dimensions:

Multiple dimensions from earlier estimates assigned to a specification can be used in the current estimate for the same specification.

Micro-Dimensions:

User can create multiple dimension sets. These sets of dimensions can be assigned to any specification in current estimate.

Model Analysis:

Users can compare rates of various but often similar specifications/sub-works/local & global cost estimates to conduct variance analysis.

Model Rate Analysis

Model Specification Analysis

Micro-Cost Estimate:

A sub-estimate consisting of specifications and their corresponding dimensions can be preloaded in the current estimate.

User Defined Specifications:

User can create his own specifications as per requirements. These specifications can be used in the current estimate as required.

My Favorites Specifications:

Frequently used specifications can be marked as favourites and used in the current estimate as a set.

Update Rates:

User can update rates of all specifications as per the current market rates. These modified specification rates will be reflected in all future estimates that will be generated.

Model Local Cost Analysis

Model Global Cost Analysis

Earthwork Quantity Estimate:

This tool will help you to estimate the amount of cutting or filling of the earth required to execute the work. This can be done for Irrigation canals, Road embankments, Tank bunds etc. This would give you a graphical report which will help you see the actual kind of cutting/filling work to be done. All the cross-section information like ordinates, abscissas, pre and finished levels and chainage are shown in tabular format.

The graphical representation of both cross-section and L-section information can be viewed for the current earthwork quantity estimate.



Reports: Extensive tabular reports can be generated using the application. Some reports that can be generated are listed below.

1. Detailed Cost Estimate
2. Abstract Cost Estimate
3. Bill of Quantities
4. Measurement Book
5. Rate Analysis
6. Global cost Estimate
7. List of Input Resources

Detailed Cost Estimate:

It includes the description of the technical specification and its Rate, Unit and Per and also the details of the measurements such as Length, Breadth and Depth/Height and Quantity.

Global Cost Estimate:

It is a summary of several Local cost estimates such as detailed cost estimates and abstract cost estimates. For large projects like a Community water supply scheme this report will help you in giving the data in one single report.

Rate Analysis:

This report displays the Analysis and the breakup of the Input resources of each specification this will help you to get the details i.e. Labor, Machinery & Material of the selected specification and their rate's as per Govt. norms.

Bill of Quantities:

This consists of the derived quantity of work required to execute, where the work which can be given to the contractors to execute and we can know the amount quoted by them in return to execute the work.

Measurement Book:

This report will give the details of dimensions of the selected specification which will enable us to get the net quantity of the particular work to be executed.

Graphical Analysis: The tabular reports can also be seen in graphical format in terms of pie-charts and bar-charts. Weightage of each individual specifications, sub-works, segmented works in the estimate can be viewed quantity-wise and amount-wise

Some of the graphical reports are as follows.

- Component Wise Analysis
- Local/Global Cost Estimate Wise Analysis
- Specification Wise Analysis
- Segment Wise Analysis
- Segment Wise Summary Analysis
- Model graphical analysis
- Steel Grade/Diameter/Bar wise analysis
- Variance of Local/Global Quantity wise analysis

8. Segment Wise Analysis
9. Segment Wise Summary
10. Steel Grade and Diameter-wise Report
11. Earthwork Quantity Report
12. Modal Analysis Report
13. Valuation
14. Cover

Segment Wise Analysis Report:

This report can analyze the estimate in different segments/phases. The estimate can be analyzed in a phase-wise manner by means of this report.

List of Input Resources:

The details of Input resources are very useful in planning the time phased requirement of materials, human resources and machinery during the course of the execution of the projects. The report summarizes all the resources required in the execution of work.

Steel Grade's and Diameter-wise Reports:

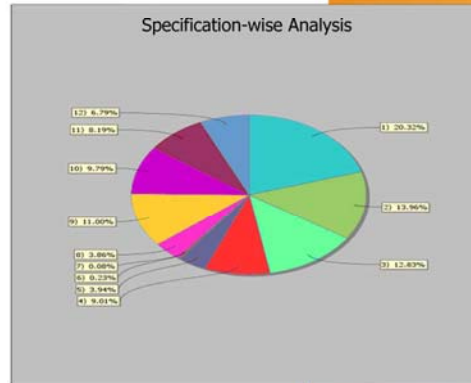
The steel reports will help you to get the diameter & grade along with cost of the steel letting you know the quantity of the steel requirement and its cost.

Earthwork Quantity Report:

This report showcases the earthwork quantities and a graphical representation of the cross-sections and L-sections of the work.

Variance Reports:

Two or more estimates are compared and the variance analysis is shown.



Developed by

Logic planet (India) I.T. services pvt. Ltd.
1209, Road no. 60
Jubilee hills
Hyderabad - 500 034
Andhra Pradesh, India

Web site : www.logicplanet.com
E-mail : info@logicplanet.com
Tel : 040- 2355 7655
Fax : 040-2355 6666